



THE WOODROFFE GOBO COLLECTION,
EXCLUSIVELY FOR THE **MAC 2000**

Martin

THE WOODROFFE GOBO COLLECTION

“Our aim in designing a new set of gobos for the MAC 2000 Profile, was to give a new lease of life to a well-loved and familiar fixture, and in doing so, allow designers to rediscover its potential.

We were determined that each gobo had to work on its own merits, either as a simple projection or as a kinetic effect when looking back down the light. The three-dimensional depth and mesmeric effects as the designer combines different gobos in their various permutations should be seen as a bonus!

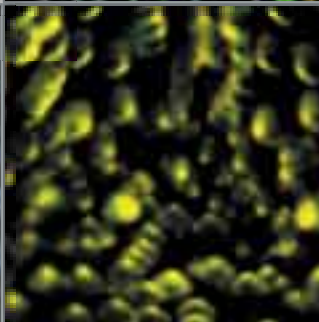
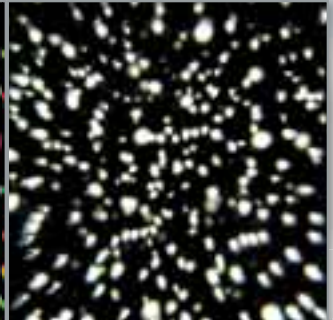
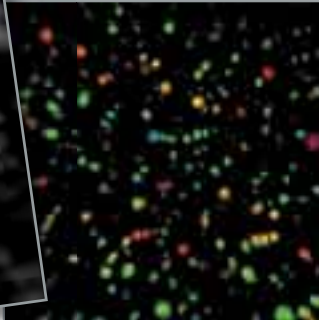
Nature and architecture have been constant inspirations in the choice of images, but we have been surprised at how, under certain conditions of focus and zoom, one element has so easily taken on such a different form, mood and appearance.

In designing the gobos we have been mindful of the need for the images to work for a variety of disciplines and designers - for theatre, for television, for live performance and for installations. I hope that there is something here for everyone.”



Matticus A fine, naturalistic star field, based on a representation of the fictional 'Matticus Galacticus' with varying sized apertures. The gobo produces a crisp projected

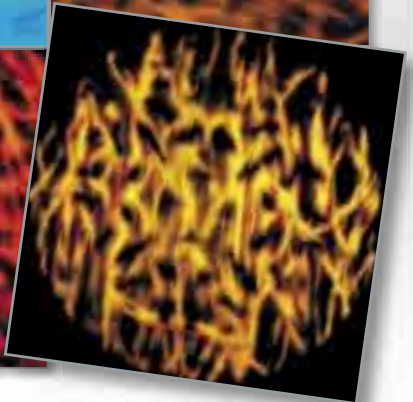
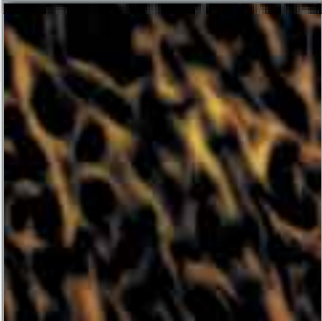
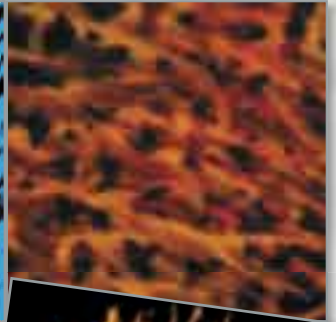
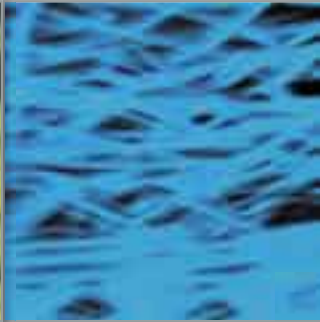
star field in focus, but then creates water and texture effects when out of focus. It also becomes a fine beam effect when projected through smoke in rotation.

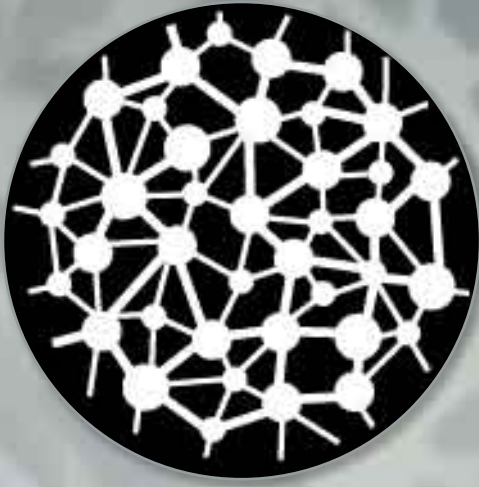




Reeds A linear breakup based on this naturalistic element. This gobo can be indexed to create naturalistic swathes of light, or used slightly out of focus for a subtle texture.

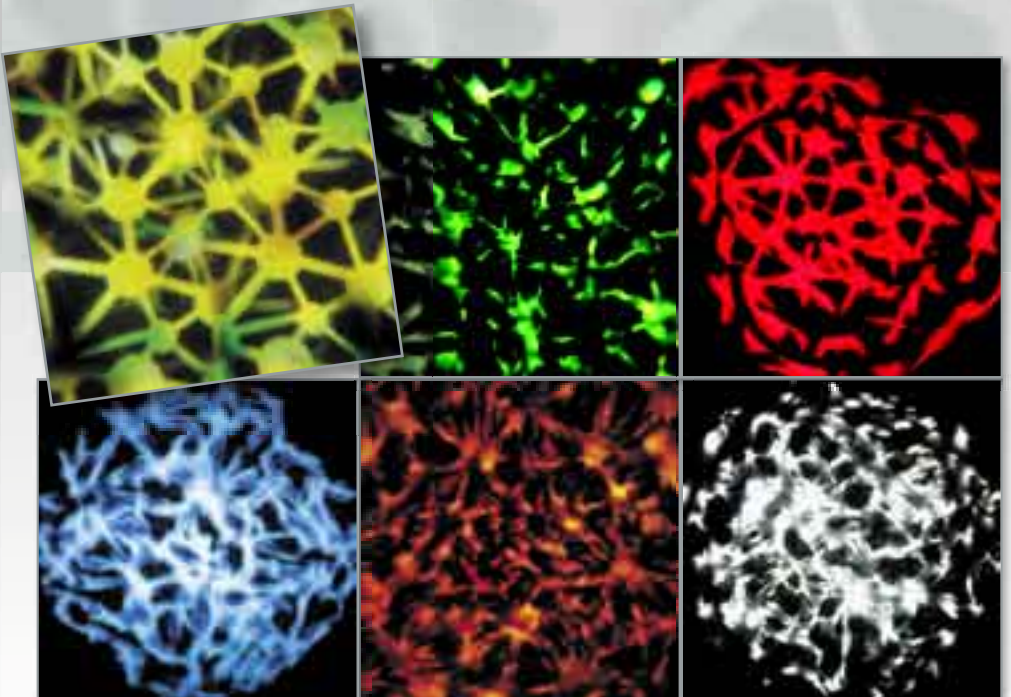
When combined with other dynamic colours and gobos it produces searing images of shade and fire.





Atoms A completely neutral, monochromatic gobo. Mainly designed to work in conjunction with other gobos, but used alone will produce

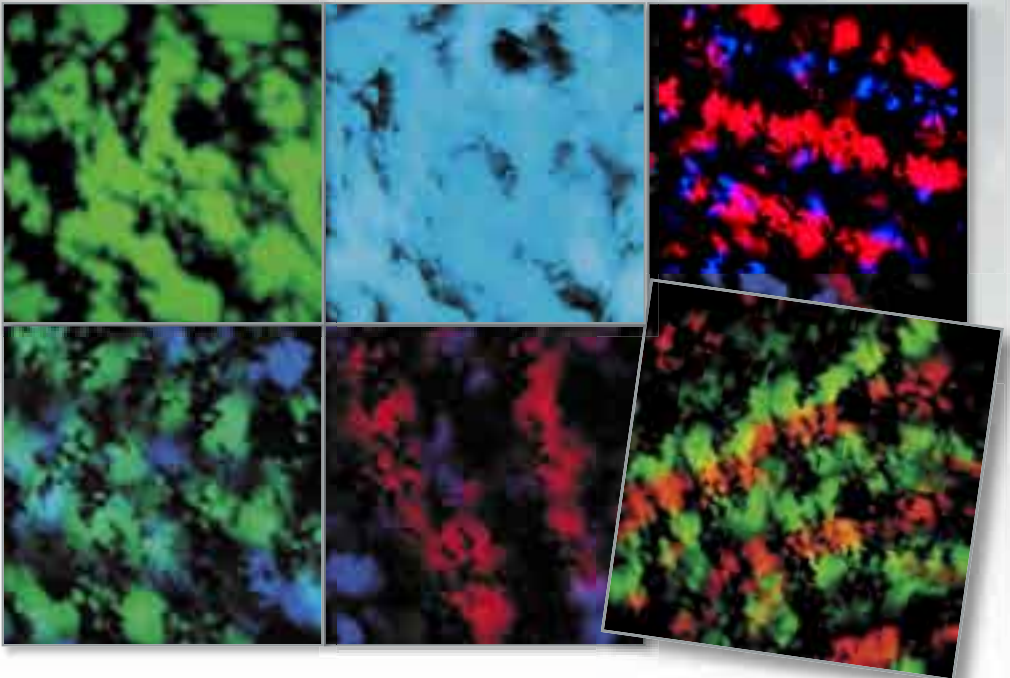
a strongly defined projected image. When overlaid in rotation the circular and linear elements produce strong dynamic effects.





Botanical A wide, foliage break-up with no obvious orientation. Used in focus this gobo produces a graphic, symbolic representation of the classic Japanese bonsai tree.

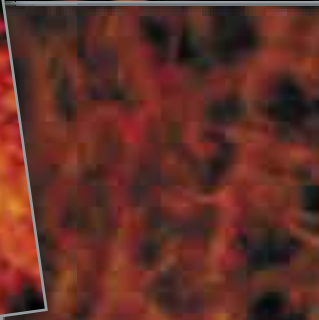
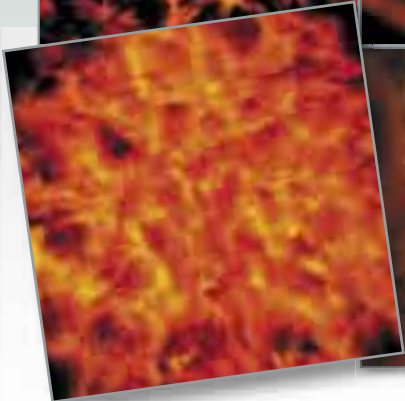
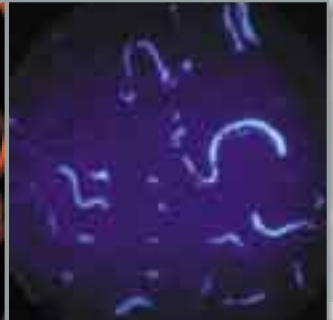
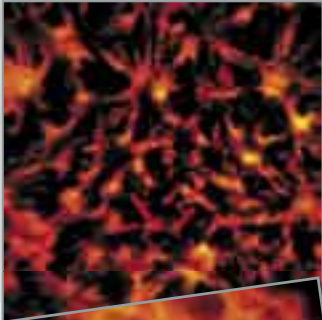
It has obvious oriental and even exotic qualities, but when slightly out of focus, it can also be used as a wide, generic break-up.





Molten A yellow, amber and red, multicoloured, glass gobo, based on the texture of molten lava. The design is deliberately contoured to emphasize the three dimensional

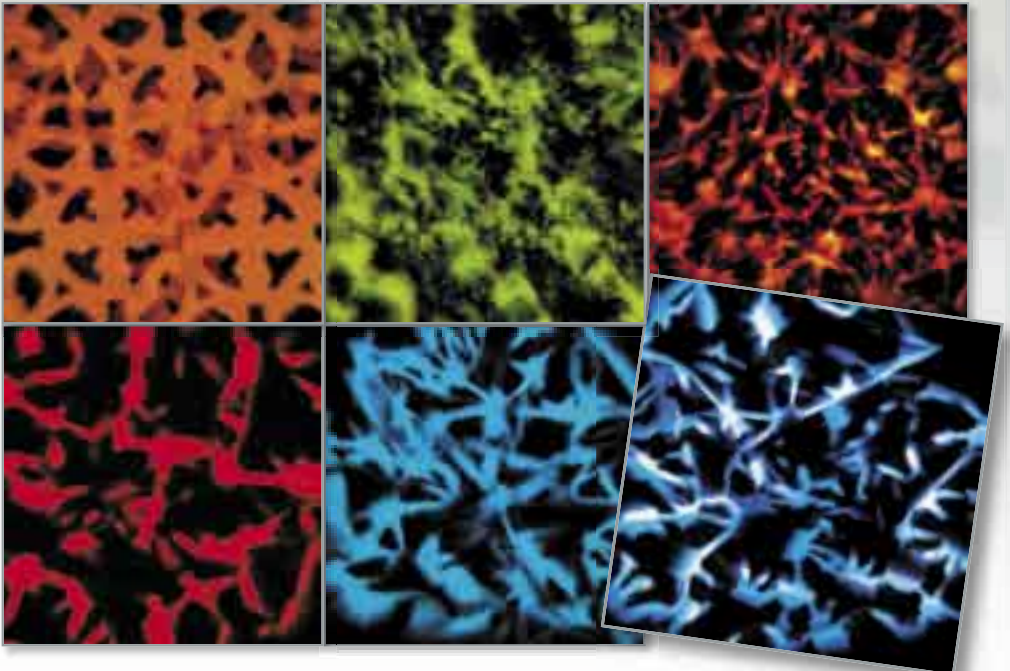
quality of the design and the lighter-toned highlights produce exotic effects when overlaid with other colours.

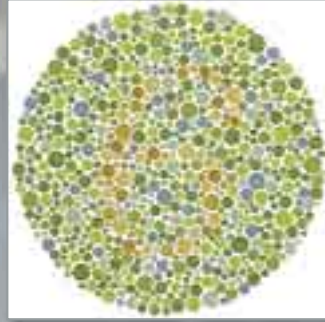
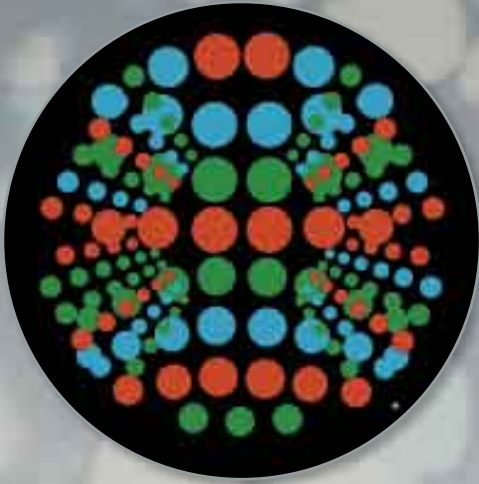




Moroccan An intricate and delicate Moorish design based on a traditional Arabic pattern which is fine enough to be able to create a hard-edge projection onto a background from most distances. Because it contains no inherent colour, it is also useful as a matte with additional

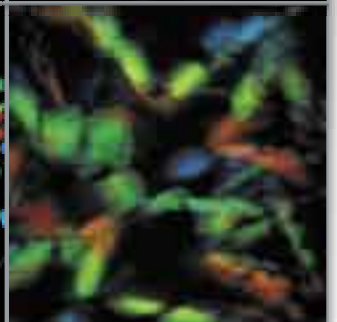
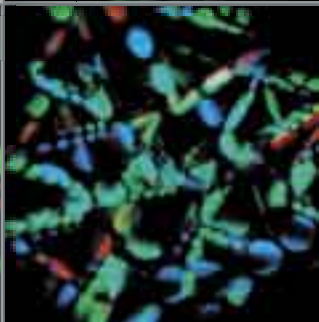
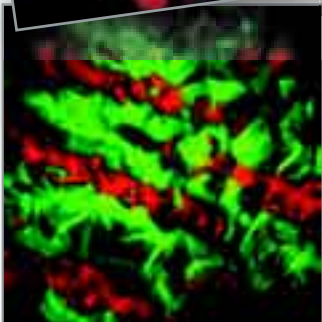
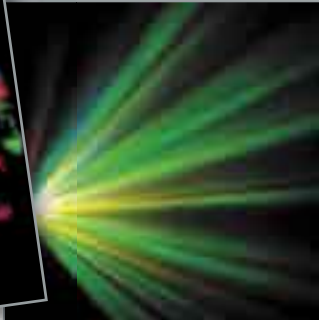
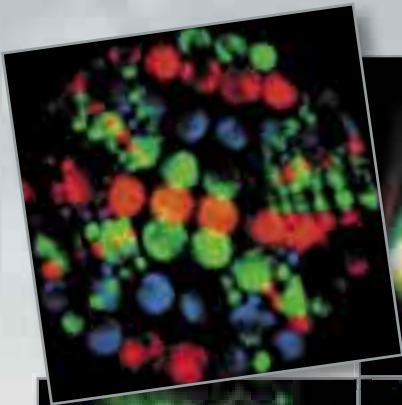
colour or texture behind, and of course, when projected towards the audience, it becomes a fine, rotating effect. Using a prism transforms the gobo into a large graphic composition.





Multi-dots A twist on the famous psychological matrix tests, this gobo is a symmetrical pattern made up of various-sized coloured dots. Different effects can be created including an overlaid colour field and out-of-focus projection effects.

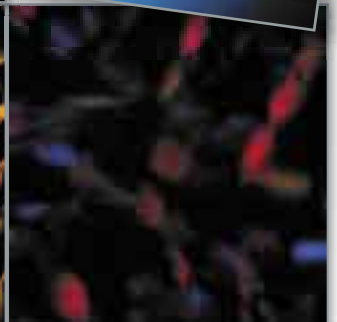
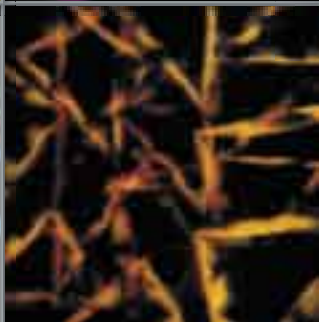
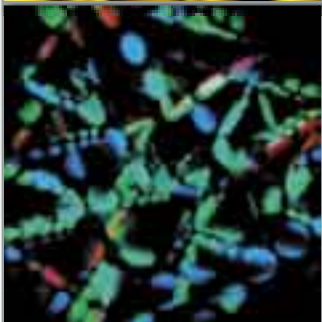
When used in multiple lights focused onto the same surface, the RGB colour choice produces an interesting secondary colour-mixing effect. Laying single planes of red, blue or green over the gobo also blanks out a portion of the dots to produce dynamic colour-changing possibilities.





Quintuple Five irregular triangles with curved sides for large-scale beam-splitting and rotation effects. It can be used on its own as a projection image

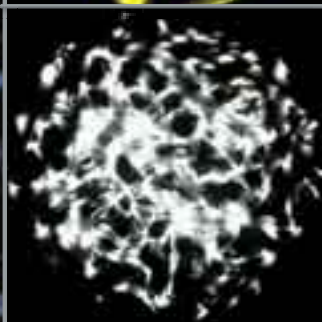
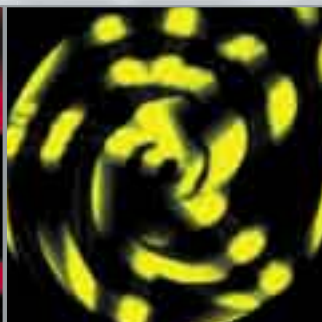
but also produces astounding visual effects when used in conjunction with a prism and other gobos.





Spring A flattened pair of spiral patterns viewed from a single perspective for the purpose of combining a classic radial break-up with the ability to rotate and create an infinity spiral effect.

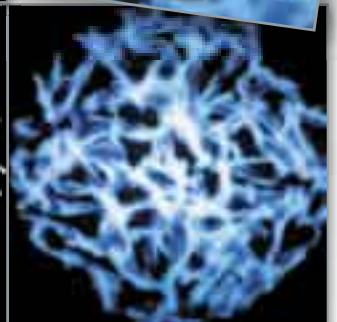
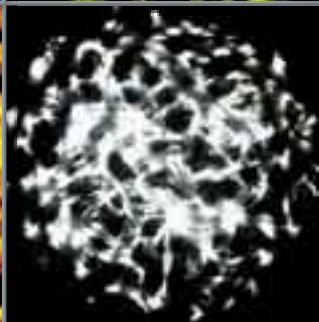
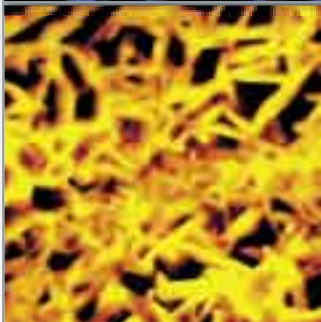
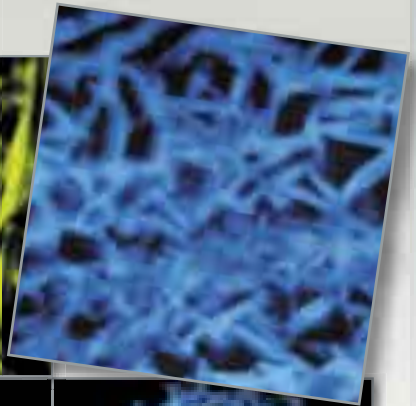
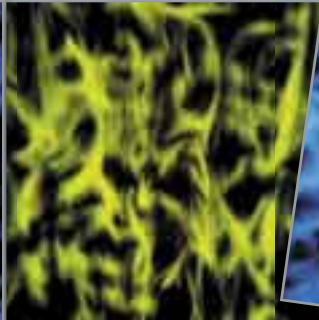
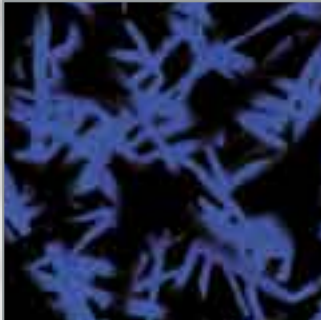
The two “tails” on the image are particularly effective when looking back into the light while it is in rotation.

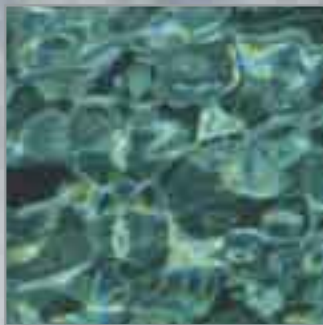
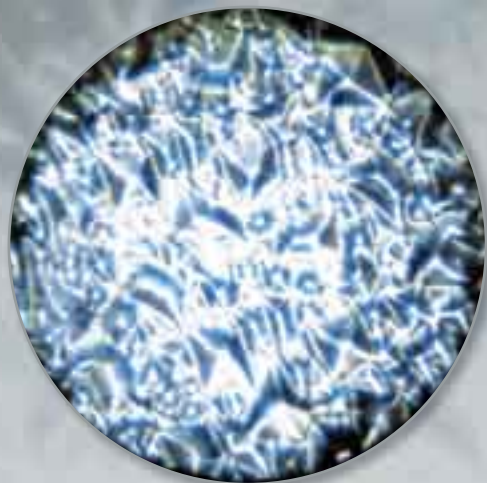




Stick-men An abstract form that comes from a stick man 'doodle'. The basic illustration is then used as a repeated element in a collage which

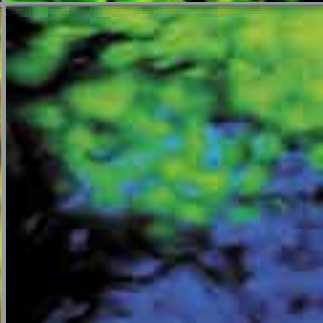
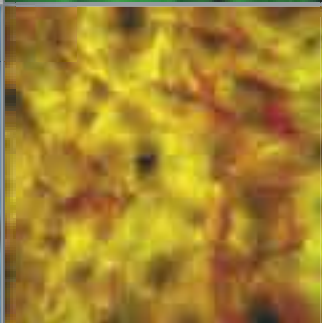
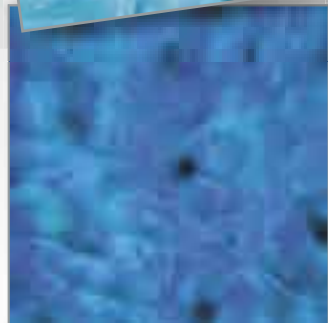
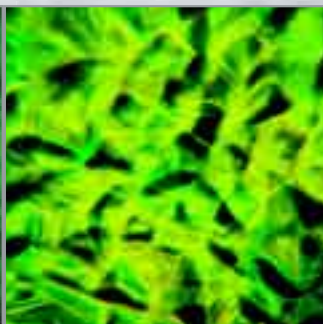
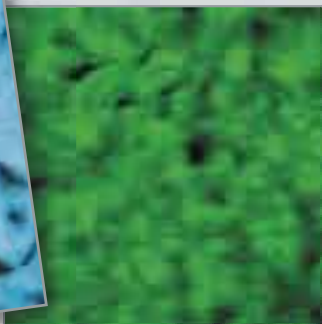
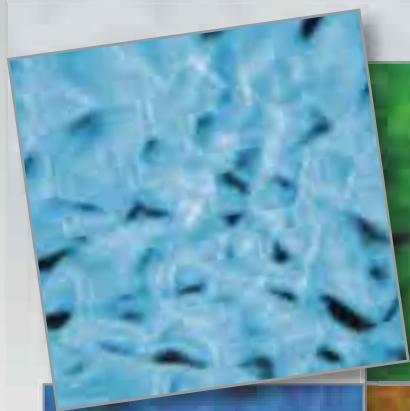
forms a composite that can be used as a graphical breakup or a projection without orientation.

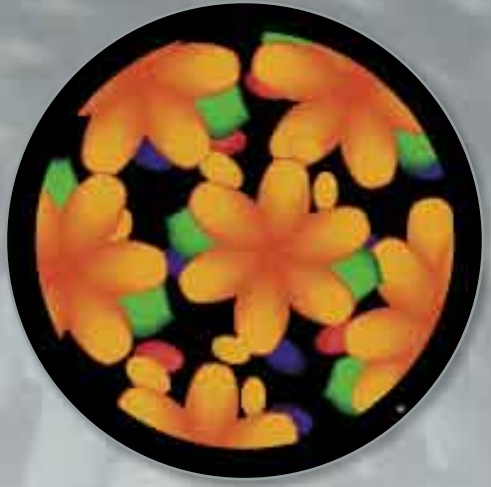




Crystal A textured glass gobo based on the reflected light from a swimming pool. Relaying a sense of fluidity and movement, Crystal moves through varying depths in perception and creates

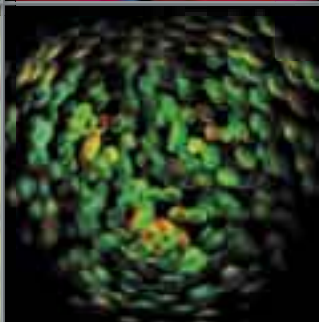
wonderful liquid projections. When combined with different colours it can also bring to life an array of organic forms.





Lilium Based on the abstract representation of a flower, this design can be used as a large-scale, bold projection or as a colour overlay for other gobos. It can also radiantly colour space

when used as a mid-air effect. The colour mixing system allows you to enhance particular colours in the original design for an even more vibrant image.





Maze Based on an industrial manhole cover, this design allows good general transmission and is therefore useful as a mat for second layer textures.

In focus it has a tough, urban quality, and because it is on a rotating wheel it can be indexed as a vertical, horizontal or angled architectural element.





Specifications are subject to change without notice

© August 2004 Martin Professional A/S

Martin